

NLAS5113

1 Ω R_{ON} SPST Switch

The NLAS5113 is an SPST switch designed for very low R_{ON} applications within portable devices. The NLAS5113 operates over a wide V_{CC} range, 1.65 V to 4.5 V, and maintain a very low R_{ON}: 1.3 Ω Max @ V_{CC} = 4.2 V. It is available in a choice of two packages: SC88 and UDFN6.

Features

- R_{ON}: 1.3 Ω Max @ V_{CC} = 4.2 V
- V_{CC} Range: 1.65 V to 4.5 V
- UDFN6 or SC88 Packages Available
- These are Pb-Free Devices

Typical Applications

- Mobile Phones
- Portable Devices



ON Semiconductor®

<http://onsemi.com>

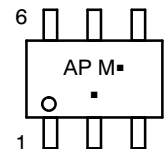
MARKING DIAGRAMS



UDFN6
CASE 517AA



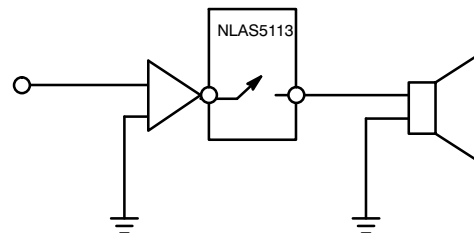
SC-88
CASE 419B



XX = Device Code
M = Date Code
▪ = Pb-Free Package

(Note: Microdot may be in either location)

APPLICATION DIAGRAM



ORDERING INFORMATION

Device	Package	Shipping†
NLAS5113MUTBG	UDFN6 (Pb-Free)	3000/Tape & Reel
NLAS5113DFT2G	SC-88 (Pb-Free)	3000/Tape & Reel

†For information on tape and reel specifications, including part orientation and tape sizes, please refer to our Tape and Reel Packaging Specification Brochure, BRD8011/D.

NLAS5113

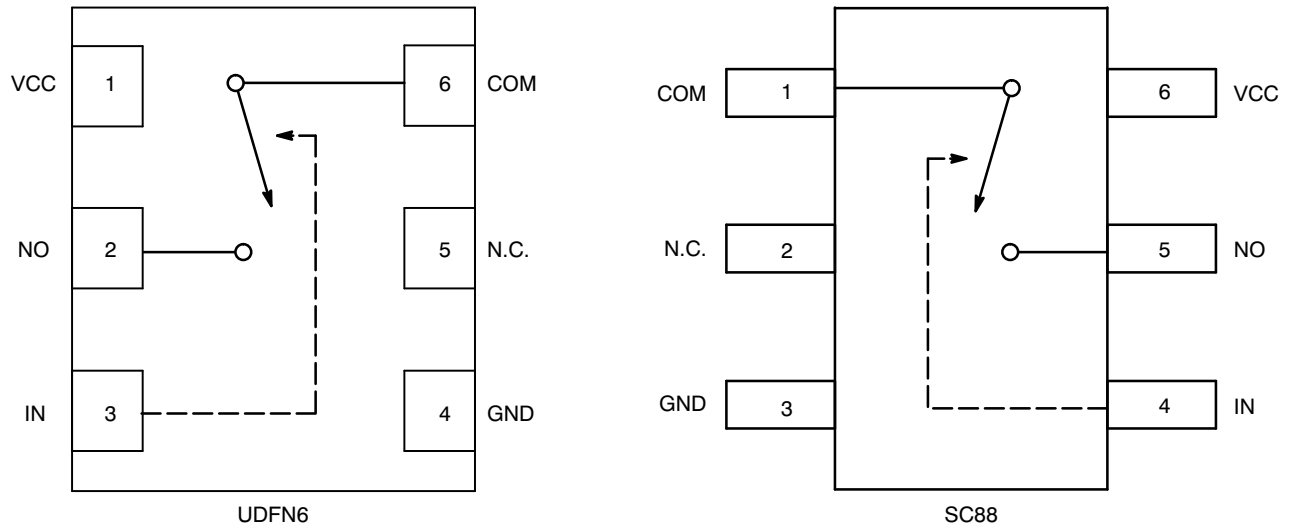


Figure 1. Functional Block Diagram Pinouts

Pin #	Name	Direction	Description
1	V _{CC}	Input	Analog Supply Voltage
2	NO	I/O	Normally Open Signal Line
3	IN	Input	Control Input for Switch #
4	GND	Input	Ground
5	N.C.	N/A	No Connect
6	COM	I/O	Common Signal Line

FUNCTION TABLE

IN	NO
0	OFF
1	ON

NLAS5113

OPERATING CONDITIONS

MAXIMUM RATINGS

Symbol	Pins	Parameter	Value	Condition	Unit
V _{CC}	V _{CC}	Positive DC Supply Voltage	-0.5 to 5.5		V
V _{IS}	NOx, NCx, COMx	Analog Signal Voltage	-0.5 to V _{CC} + 0.5		V
V _{IN}	IN1, IN2	Control Input Voltage	-0.5 to 6.0		V
I _{CC}	V _{CC}	Positive DC Supply Current	50		mA
I _{IS_CON}	NOx, NCx, COMx	Analog Signal Continuous Current	±300	Closed Switch	mA
I _{IS_PK}	NOx, NCx, COMx	Analog Signal Peak Current	±500	10% Duty Cycle	mA
I _{IN}	IN	Control Input Current			mA
T _{STG}		Storage Temperature Range	-65 to 150		°C

Stresses exceeding Maximum Ratings may damage the device. Maximum Ratings are stress ratings only. Functional operation above the Recommended Operating Conditions is not implied. Extended exposure to stresses above the Recommended Operating Conditions may affect device reliability.

RECOMMENDED OPERATING CONDITIONS

Symbol	Pins	Parameter	Value	Condition	Unit
V _{CC}	V _{CC}	Positive DC Supply Voltage	1.65 to 4.5		V
V _{IS}	NOx, NCx, COMx	Analog Signal Voltage	0 to V _{CC}		V
V _{IN}	IN1, IN2	Control Input Voltage	0 to V _{CC}		V
T _A		Operating Temperature Range	-40 to 85		°C

NOTE: Minimum and maximum values are guaranteed through test or design across the **Recommended Operating Conditions**, where applicable. Typical values are listed for guidance only and are based on the particular conditions listed for each section, where applicable. These conditions are valid for all values found in the characteristics tables unless otherwise specified in the test conditions.

NLAS5113

DC ELECTRICAL CHARACTERISTICS Typical: T = 25°C; V_{CC} = 3.3 V, R_L = 50 Ω

Symbol	Pins	Parameter	Test Conditions	Min	Typ	Max	Unit
VOLTAGE I _{OUT} < 20μA							
V _{IH}	INx	Control Input High	2.7 V < V _{CC}	2.0			V
V _{IL}	INx	Control Input Low				0.8	V

CURRENT

I _{IN}	INx	Control Input Leakage	0 V < V _{IN} < V _{CC}		±0.1	±1.0	μA
I _{NO/NC (OFF)}	NCx, NOx	OFF State Leakage	0 V < V _{COM} , V _{NO} < V _{CC}		±0.1	±1.0	μA
I _{COM (ON)}	COMx	ON State Leakage	0 V < V _{COM} , V _{NO} < V _{CC}		±0.5	±2.0	μA
I _{CC}	V _{CC}	Quiescent Supply	All Channels ON or OFF; V _{IN} = V _{CC} or GND, I _{OUT} = 0;		1.0	2.0	μA

ON RESISTANCE I_{ON} = -100 mA, V_{IS} = 0 to V_{CC}

Symbol	Pins	Parameter	Test Conditions	V _{CC} (V)	Min	Typ	Max	Unit
R _{ON}		ON Resistance		2.7 4.2		1.7 1.1	2.0 1.3	Ω
R _{FLAT}		R _{ON} Flatness		2.7 4.2		0.4 0.4		Ω

ESD PROTECTION

Pins	Description	Minimum Voltage
All Pins to Ground	Human Body Model	3 kV

AC ELECTRICAL CHARACTERISTICS Typical: T = 25°C; V_{CC} = 3.3 V, R_L = 50 Ω, C_L = 5 pF, f = 1 MHz

Symbol	Parameter	Test Conditions	Min	Typ	Max	Unit
BW	-3dB Bandwidth			457		MHz
THD	Total Harmonic Distortion	f = 20 Hz to 20 kHz, 1.0 V _{PP}		0.08		%

TRANSITION TIMES

t _{ON}	Turn On Time: COM to NO			7.0		ns
t _{OFF}	Turn Off Time: COM to NO			4.5		ns

OFF ISOLATION V_{NO} or V_{NC} (pk-pk) = 1.0 V

O _{IRR}	Off Isolation			-57		dB
------------------	---------------	--	--	-----	--	----

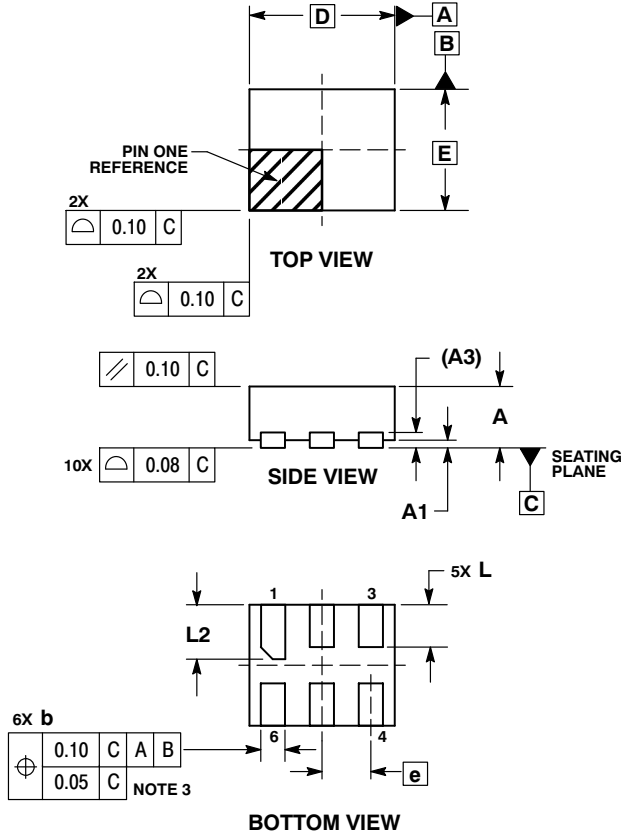
CAPACITANCE

Symbol	Pins	Parameter	Test Conditions	Min	Typ	Max	Unit
C _{IN}	INx	Control Input	V _{CC} = 0 V		2.8		pF
C _{ON}	NO to COM	Through Switch	V _{CC} = V _{IN} = 3.3 V		20		pF
C _{OFF}	NO1, NO	Individual Port	V _{CC} = 3.3 V, V _{IN} = 0 V		14		pF

NLAS5113

PACKAGE DIMENSIONS

UDFN6, 1.2x1.0, 0.4P
CASE 517AA-01
ISSUE B

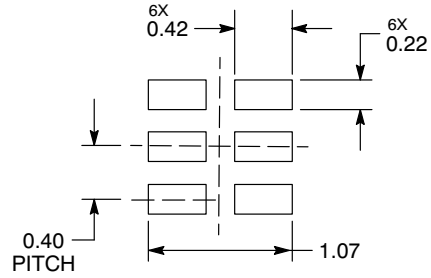


NOTES:

1. DIMENSIONING AND TOLERANCING PER ASME Y14.5M, 1994.
2. CONTROLLING DIMENSION: MILLIMETERS.
3. DIMENSION b APPLIES TO PLATED TERMINAL AND IS MEASURED BETWEEN 0.25 AND 0.30 mm FROM TERMINAL.
4. COPLANARITY APPLIES TO THE EXPOSED PAD AS WELL AS THE TERMINALS.

MILLIMETERS		
DIM	MIN	MAX
A	0.45	0.55
A1	0.00	0.05
A3	0.127 REF	
b	0.15	0.25
D	1.20 BSC	
E	1.00 BSC	
e	0.40 BSC	
L	0.30	0.40
L2	0.40	0.50

MOUNTING FOOTPRINT*



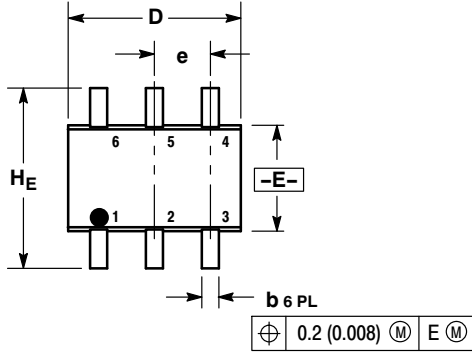
DIMENSIONS: MILLIMETERS

*For additional information on our Pb-Free strategy and soldering details, please download the ON Semiconductor Soldering and Mounting Techniques Reference Manual, SOLDERRM/D.

NLAS5113

PACKAGE DIMENSIONS

SC-88/SC70-6/SOT-363
CASE 419B-02
ISSUE W

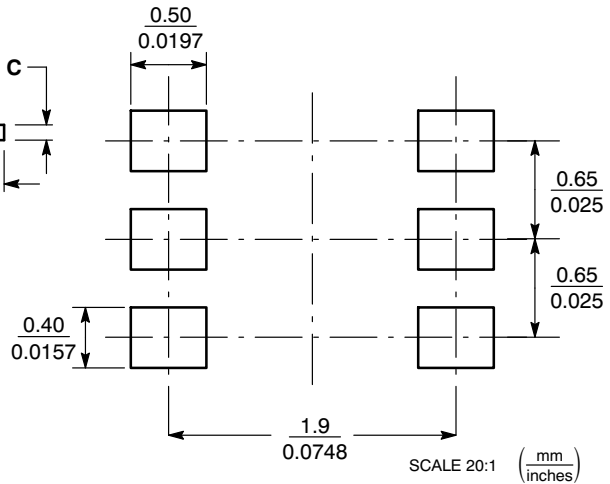


NOTES:

1. DIMENSIONING AND TOLERANCING PER ANSI Y14.5M, 1982.
2. CONTROLLING DIMENSION: INCH.
3. 419B-01 OBSOLETE, NEW STANDARD 419B-02.

DIM	MILLIMETERS			INCHES		
	MIN	NOM	MAX	MIN	NOM	MAX
A	0.80	0.95	1.10	0.031	0.037	0.043
A1	0.00	0.05	0.10	0.000	0.002	0.004
A3	0.20 REF			0.008 REF		
b	0.10	0.21	0.30	0.004	0.008	0.012
C	0.10	0.14	0.25	0.004	0.005	0.010
D	1.80	2.00	2.20	0.070	0.078	0.086
E	1.15	1.25	1.35	0.045	0.049	0.053
e	0.65 BSC			0.026 BSC		
L	0.10	0.20	0.30	0.004	0.008	0.012
H _E	2.00	2.10	2.20	0.078	0.082	0.086

SOLDERING FOOTPRINT*



SC-88/SC70-6/SOT-363

*For additional information on our Pb-Free strategy and soldering details, please download the ON Semiconductor Soldering and Mounting Techniques Reference Manual, SOLDERRM/D.

ON Semiconductor and are registered trademarks of Semiconductor Components Industries, LLC (SCILLC). SCILLC reserves the right to make changes without further notice to any products herein. SCILLC makes no warranty, representation or guarantee regarding the suitability of its products for any particular purpose, nor does SCILLC assume any liability arising out of the application or use of any product or circuit, and specifically disclaims any and all liability, including without limitation special, consequential or incidental damages. "Typical" parameters which may be provided in SCILLC data sheets and/or specifications can and do vary in different applications and actual performance may vary over time. All operating parameters, including "Typicals" must be validated for each customer application by customer's technical experts. SCILLC does not convey any license under its patent rights nor the rights of others. SCILLC products are not designed, intended, or authorized for use as components in systems intended for surgical implant into the body, or other applications intended to support or sustain life, or for any other application in which the failure of the SCILLC product could create a situation where personal injury or death may occur. Should Buyer purchase or use SCILLC products for any such unintended or unauthorized application, Buyer shall indemnify and hold SCILLC and its officers, employees, subsidiaries, affiliates, and distributors harmless against all claims, costs, damages, and expenses, and reasonable attorney fees arising out of, directly or indirectly, any claim of personal injury or death associated with such unintended or unauthorized use, even if such claim alleges that SCILLC was negligent regarding the design or manufacture of the part. SCILLC is an Equal Opportunity/Affirmative Action Employer. This literature is subject to all applicable copyright laws and is not for resale in any manner.

PUBLICATION ORDERING INFORMATION

LITERATURE FULFILLMENT:
Literature Distribution Center for ON Semiconductor
P.O. Box 5163, Denver, Colorado 80217 USA
Phone: 303-675-2175 or 800-344-3860 Toll Free USA/Canada
Fax: 303-675-2176 or 800-344-3867 Toll Free USA/Canada
Email: orderlit@onsemi.com

N. American Technical Support: 800-282-9855 Toll Free
USA/Canada
Europe, Middle East and Africa Technical Support:
Phone: 421 33 790 2910
Japan Customer Focus Center
Phone: 81-3-5773-3850

ON Semiconductor Website: www.onsemi.com

Order Literature: <http://www.onsemi.com/orderlit>

For additional information, please contact your local Sales Representative